

Chocolate Treat Box

TUTORIAL By Miriam Thomas
Independent Stampin' Up!® Demonstrator
<http://www.creationsbymiriam.com>



To make this treat box you will require:

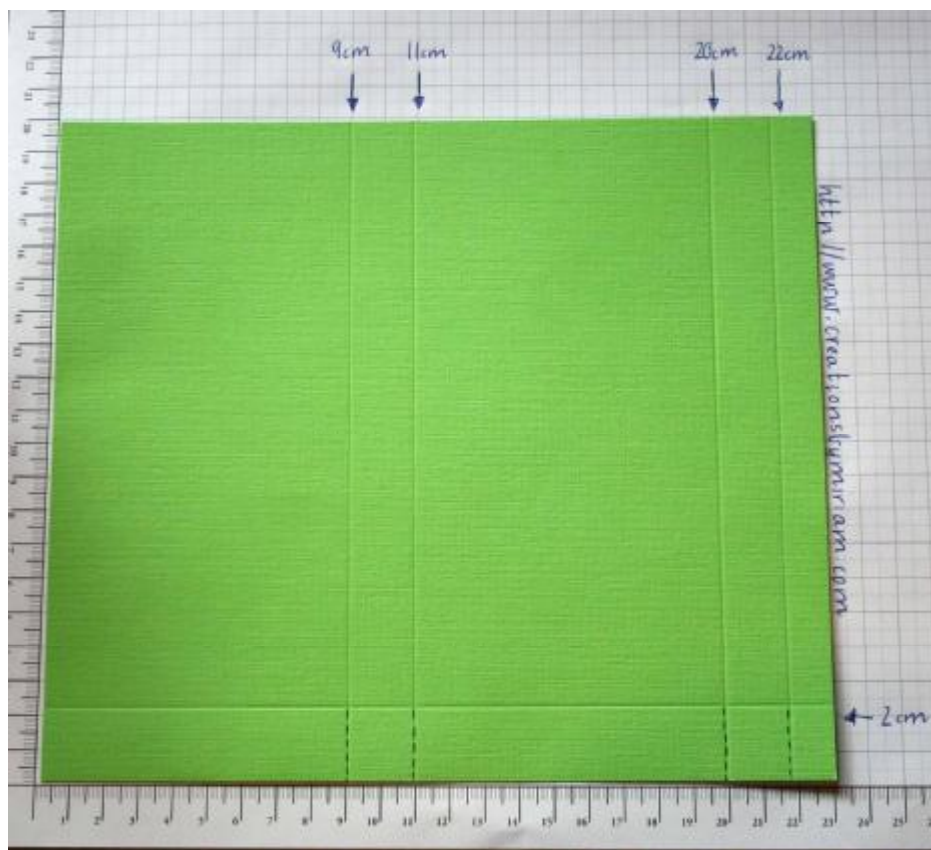
- Paper Trimmer
- Bone Folder
- Horizontal Slot Punch
- Ribbon
- Stamp sets and patterned paper for decoration purposes
- Cardstock
- Sticky Strip
- Chocolate Bar 150g (Cadbury)
- Paper snips (scissors)



INSTRUCTIONS

1. Start with a piece of cardstock that is 23cm x 20cm (OR 9inches x 7 and $\frac{3}{4}$ inches)
2. With the cardstock positioned lengthwise score at 9cm, 11cm 20cm and 22cm (OR 3 $\frac{1}{2}$ inches 4 $\frac{1}{4}$ inches, 7 $\frac{3}{4}$ inches and 8 $\frac{1}{2}$ inches)

Tips for scoring: Use a Stampin' Up Bone Folder. You can use a ruler to run the scorer against for a straight line but I would recommend using the cutting track on the paper trimmer. The great thing about the trimmer from Stampin' Up! is that it has an arm that pulls out for precise measurements.



3. Turn the paper on it's side and score the other way at 2cm (OR $\frac{3}{4}$ inch)
4. This will become the bottom of the box. Trim the areas marked with dotted lines using your paper snips (to create flaps)
5. Before folding- you may wish to stamp over the cardstock at this point.
6. Fold along the score lines ready to assemble the box
7. Place sticky strip (Stampin' Up! heavy duty double sided tape) on the smallest strip (on the right hand side pictured above)
8. Assemble your box. You will need to use some sticky strip along the bottom to hold it in place. I find it best to place sticky strip on the small flaps and one of the larger flaps. You should be able to position the flaps so that the small flaps are hidden inside the box.



9. Use the horizontal slot punch to create an area to slide the ribbon through.
Tip: Turn your punch upside down when you are using it so that you can see where you are punching. You will find the slot punch may not be wide enough for your piece of ribbon- simply slide your punch along a bit more and punch again (as pictured above)
10. Feed your ribbon through the slots as shown. When you place your block of chocolate into the top of the box- the ribbon will feed into the box and you can tie a bow or knot at the top





11. Decorate your box with patterned paper and stamp sets as desired



For a smaller chocolate bar (The size of Cadbury's Fundraiser Chocolate) please use the following measurements

Cardstock size 19cm x 17cm (OR 7 ½ inches x 6 ¾ inches)

Score at 7cm, 9cm, 16cm and 18cm (OR 2 ¾ inches, 3 ½ inches, 6 ¼ inches and 7 inches)

Turn and score base at 2cm (or ¾ inch)

